

PROJECT PROPOSAL FOR THE CONSTRUCTION OF HOPE VILLAS JUNIOR SCHOOL



BY AFRICAN CHILDREN'S HOPE FOR LOVE FOUNDATION UGANDA
(PASTOR MARK MESACH SSINAMENYE)

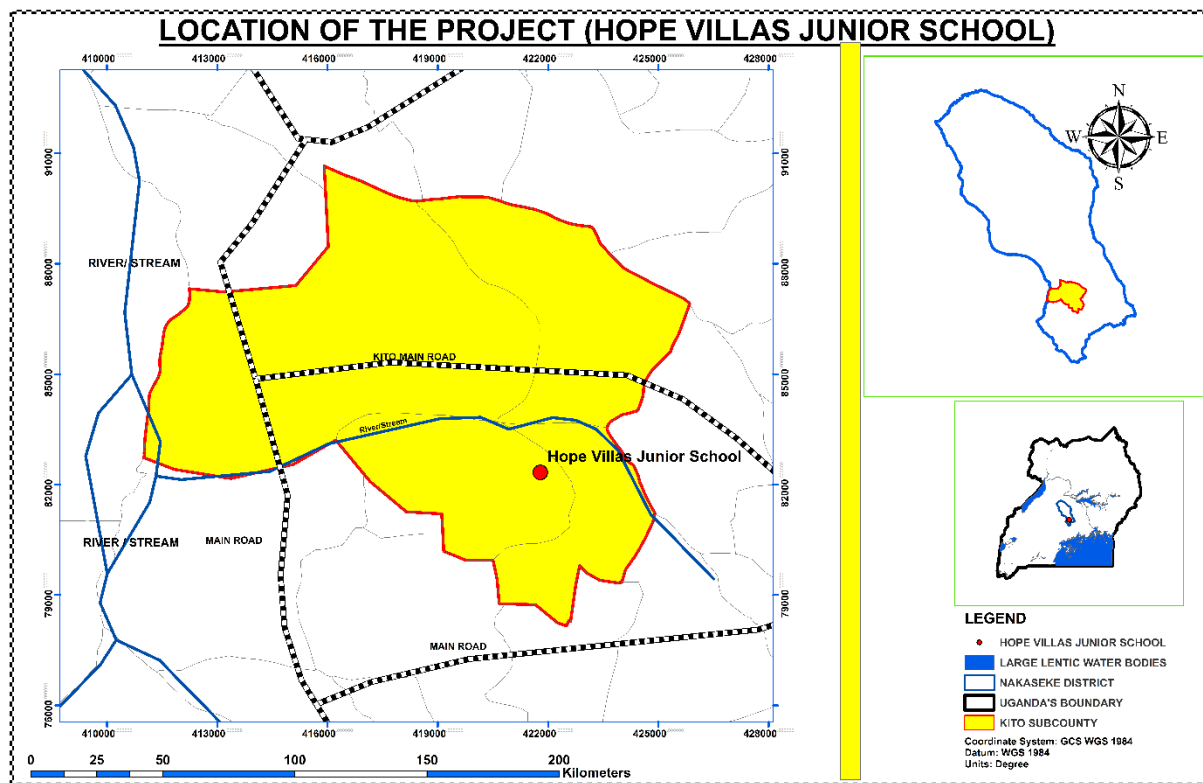
Table of Contents

EXECUTIVE SUMMARY	3
1.1 Executive Summary	3
1.2 Targets of the project	4
2 BACKGROUND	5
2.1 The school's organisational structure	5
Board of Directors	6
2. 2 Historical context	11
3. 0 Objectives	12
4.0 Project Description	16
5.0 Implementation Plan	18
5.1 Phase 1: Planning and Fundraising (Months 1-6)	18
5.2 Phase 2: Construction (Months 7-12)	18
5.3 Phase 3: Program Development (Months 13-15)	19
5.4 Phase 4: Inauguration and Operation (Months 16 Onwards)	19
6.0 Conclusion	Error! Bookmark not defined.
REFERENCES	20
APPENDICES	21

EXECUTIVE SUMMARY

1.1 Executive Summary

This project proposal aims to build a school dedicated to providing high-quality education and essential support services to orphans and vulnerable children in the Sub-County of Kito, Nakaseke District, Bulemezi, Uganda. The overarching aim is to address and ultimately eradicate chronic poverty, enhance living conditions, and create a nurturing environment for these children and their families.



The proposed project will leverage community engagement, implement sustainable construction practices, and deliver comprehensive education programs tailored to meet the needs of the target population. By doing so, we aim to empower the children with the knowledge and skills necessary to improve their future prospects and contribute positively to their communities.

Our vision is to establish a beacon of hope and opportunity in the area, fostering a supportive and inclusive educational environment that will drive long-term, sustainable development in the region. We believe that with your support, we can transform lives and build a brighter future for the children.

1.2 Targets of the project

The primary objective of this project is to provide a comprehensive educational platform that empowers vulnerable children with the knowledge and skills required to break the cycle of poverty. Through a holistic approach, the school will focus on academic excellence, character development, and life skills training. By equipping students with a well-rounded education, we aim to foster their intellectual, emotional, and social growth.

Community Engagement

Central to the success of this project is the active engagement and participation of the local community. We will collaborate with community leaders, parents, and local organizations to ensure the school meets the unique needs of the children it serves. This community-centric approach will not only foster a sense of ownership and pride among residents but also ensure the sustainability and relevance of the school's programs.

Sustainable Construction

The school will be constructed using sustainable building practices, emphasizing the use of local materials and labor. This approach will minimize environmental impact, reduce costs, and support the local economy. The design will incorporate eco-friendly features such as solar energy, rainwater harvesting, and proper waste management systems to create a healthy and sustainable learning environment.

Comprehensive Education Programs

Our education programs will go beyond traditional academic subjects to include vocational training, health education, and psychosocial support. This will enable us to address the UN's 4th SDG (Walsh et al., 2022) which focuses on providing quality education to all people. We will provide a safe and supportive environment where children can thrive and reach their full potential. Special emphasis will be placed on addressing the unique challenges faced by orphans and vulnerable children, ensuring they receive the support they need to overcome their circumstances.

Expected Outcomes

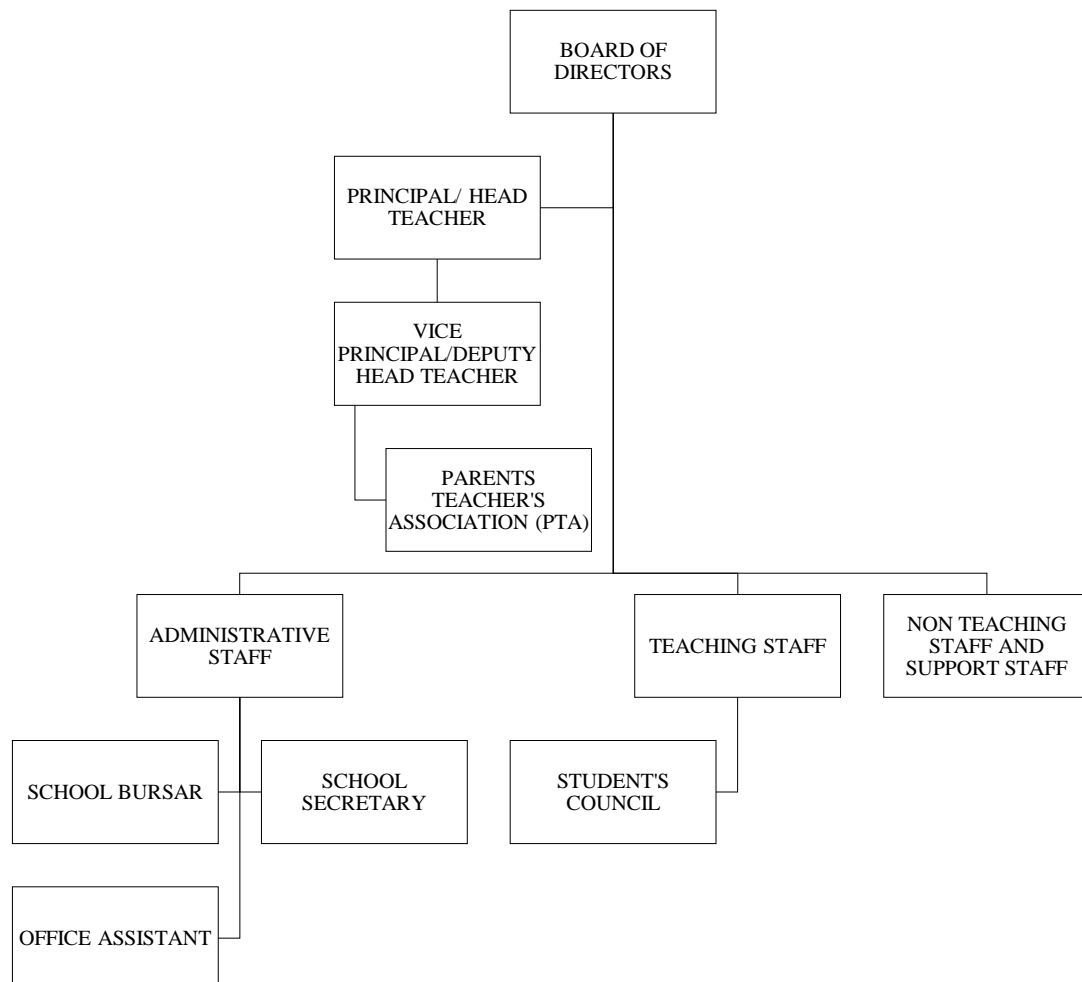
By the end of the project, we anticipate the following outcomes:

- Improved educational attainment and literacy rates among orphans and vulnerable children.
- Enhanced life skills and vocational capabilities, leading to better employment opportunities.

- Strengthened community ties and increased local involvement in educational initiatives.
- Sustainable and environmentally friendly school infrastructure.
- Improved health and well-being of students through access to health education and services.

2 BACKGROUND

2.1 The school's organisational structure



Board of Directors

The Board of Directors is responsible for the overall governance and strategic direction of the school. Their responsibilities include:

Governance and Policy Making: Establishing policies and guidelines that govern the school's operation and ensure compliance with legal and regulatory requirements.

Strategic Planning: Setting long-term goals and strategic plans for the school's growth and development.

Financial Oversight: Approving budgets, monitoring financial performance, and ensuring the school's financial health.

Hiring and Evaluation: Hiring, evaluating, and supporting the head teacher or principal.

Fundraising and Resource Development: Overseeing fundraising activities and ensuring adequate resources are available for the school.

Community Engagement: Acting as a liaison between the school and the community, fostering relationships, and promoting the school's mission and values

Head Teacher:

The Head Teacher is the primary academic leader of the school, responsible for setting educational standards and goals. This role includes managing the teaching staff, developing the curriculum, and monitoring student performance. The Head Teacher ensures that the school's academic programs are of high quality and that teachers are provided with the support and resources they need to succeed.

Deputy Head Teacher

The Deputy Head Teacher assists the Head Teacher in the day-to-day management of the school. His responsibilities include:

Administrative Support: Assisting with administrative tasks and school management.

Academic Leadership: Overseeing curriculum implementation, teacher performance, and student achievement.

Discipline and Student Welfare: Managing student behavior, implementing disciplinary measures, and ensuring student welfare.

Staff Supervision: Supervising and supporting teachers and non-teaching staff.

Timetabling and Scheduling: Developing and managing the school timetable and schedules.

Parental Communication: Communicating with parents and guardians regarding student progress and school matters

The Parents Teachers Association (PTA) plays a crucial role in fostering a collaborative environment between parents and the school. Here are the typical responsibilities of a PTA:

Parents Teachers Association (PTA)

The PTA is responsible for promoting collaboration and communication between parents, teachers, and the school administration to enhance the educational experience of students. Their responsibilities include:

Facilitating Communication: Acting as a bridge between parents and the school, facilitating open communication and addressing concerns or suggestions.

Supporting School Activities: Organizing and supporting school events, extracurricular activities, and programs that benefit students.

Fundraising: Planning and executing fundraising activities to provide additional resources and support for school projects, equipment, and programs.

Advocacy: Representing the interests and concerns of parents and students to the school administration and, where applicable, to local educational authorities.

Parent Education: Providing workshops, seminars, and resources to help parents support their children's education and well-being.

Community Building: Creating a sense of community among parents, teachers, and students through social events and activities.

Volunteering: Coordinating volunteer efforts to support school needs, such as classroom assistance, event organization, and other activities.

Advisory Role: Serving in an advisory capacity to the school administration on issues related to school policy, curriculum, and overall school improvement.

Encouraging Parental Involvement: Promoting active participation of parents in their children's education and school activities.

Monitoring and Evaluation: Helping monitor and evaluate school programs and initiatives to ensure they meet the needs of students and the school community.

The PTA works collaboratively with the school administration and teachers to create a supportive and enriching educational environment for all students.

Bursar:

The Bursar manages the school's financial operations, including budgeting, accounting, and financial reporting. This individual is responsible for overseeing the allocation of funds, school fees, and ensuring financial compliance with regulatory requirements. The Bursar works closely with the General Manager to maintain financial stability and transparency.

School Secretary

The School Secretary provides administrative support to ensure the smooth operation of the school. Their responsibilities include:

Administrative Tasks: Managing correspondence, maintaining records, and handling communication.

Office Management: Ensuring the school office runs efficiently, managing supplies, and coordinating office activities.

Reception Duties: Welcoming visitors, answering phone calls, and providing information.

Record Keeping: Maintaining student and staff records, attendance registers, and other important documents.

Supporting School Administration: Assisting with scheduling meetings, preparing reports, and handling administrative requests.

Office Assistant

The Office Assistant supports the administrative functions of the school office. Her responsibilities include:

Clerical Support: Performing clerical tasks such as filing, photocopying, and data entry.

Assisting Staff: Providing support to teachers and administrative staff as needed.

Handling Mail: Managing incoming and outgoing mail.

Maintaining Office Supplies: Monitoring and replenishing office supplies.

Errand Running: Running errands as required by school administration.

Student's Council

The Student's Council represents the student body and plays a key role in school governance and activities. The responsibilities of our student's council include:

Student Representation: Representing the views and interests of the students to the school administration.

Organizing Events: Planning and organizing student events, activities, and initiatives.

Promoting School Spirit: Fostering school spirit and a positive school culture.

Advocacy and Welfare: Advocating for student welfare and addressing student concerns and issues.

Leadership Development: Providing leadership opportunities and promoting leadership skills among students.

These roles collectively ensure the smooth and effective operation of the school, fostering a supportive and productive educational environment.

Teachers:

Teachers are responsible for delivering the curriculum, engaging students in the learning process, and assessing their academic progress. They create a supportive and stimulating classroom environment, adapt teaching methods to meet the needs of individual students, and collaborate with colleagues to enhance educational outcomes. Teachers also participate in professional development activities to continuously improve their teaching skills.

Social Worker:

The Social Worker provides essential support services to students, addressing their social, emotional, and psychological needs. This role includes counseling students, facilitating access to health and social services, and working with families to support children's well-being. The Social Worker also develops programs and initiatives to foster a positive school environment and address issues such as bullying, trauma, and behavioral problems.

Cooks:



The Cooks are responsible for preparing nutritious meals for students and staff, ensuring that dietary needs and preferences are met. They plan menus, manage kitchen supplies, and maintain high standards of hygiene and food safety. By providing healthy meals, the Cooks play a crucial role in supporting the overall health and well-being of the school community.

Security Personnels:

The Security Personnels ensure the safety and security of the school premises, students, staff, and visitors. Their duties include monitoring entrances and exits, conducting regular patrols, and responding to emergencies. The Security Personnels also implement and enforce security policies and procedures to create a safe learning environment for everyone in the school.

African children's hope for love foundation Uganda	
DATE OF ESTABLISHMENT	8 th / November/ 2013 with registration number 10265.
LOCATION	Kasiiso – Kibaale, Kito Sub-County, Nakaseke District, Bulemezi, West Buganda, Uganda. Approximately 65 kilometers from the capital of Uganda, Kampala.
VISION	To bring about Holistic community transformation
MISSION	To empower vulnerable communities in Uganda through evangelism, education, healthcare, and sustainable development programs.
CONTACTS	hopeforlovefoundation@gmail.com , www.hopeforlovefoundation.org

2. 2 Historical context

Founded in 2013, African Children's Hope for Love Foundation Uganda emerged as a response to the acute needs of underserved communities in Uganda. At the time, a substantial portion of the population was living below the poverty line, with many children in these areas lacking access to essential education, healthcare, and nutritional support.



Recognizing these dire conditions, the founders of African Children's Hope for Love Foundation Uganda, along with international volunteers and partners, identified the necessity

for robust support systems to uplift and empower these vulnerable communities. This led to the establishment of various key initiatives, including:

Hope Villas Orphanage Home: Providing shelter, care, and a nurturing environment for orphans.

Hope Church: Serving as a spiritual and community center.

Hope Villas Kindergarten: Offering early childhood education to foster foundational learning.

Child Sponsorship Program: Connecting sponsors with children to ensure continuous support for education and welfare.

Street Programs: Addressing the needs of street children through outreach and support services.

Supporting HIV/AIDS Children: Providing specialized care and support for children affected by HIV/AIDS.

Evangelism: Promoting spiritual growth and moral development within the community.

These projects collectively aim to alleviate poverty, promote education, and improve living conditions, thereby creating a sustainable and supportive environment for the affected populations. The foundation's ongoing efforts are a testament to its commitment to fostering hope and love among Uganda's most vulnerable children.

3.0 Objectives

1. Education Access: Providing Free, Quality Primary Education

Curriculum Development: Designing a curriculum that meets national standards and emphasizes core subjects such as mathematics, language arts, science, and social studies.

Qualified Teaching Staff: Hiring and training qualified teachers who are dedicated to providing engaging and effective primary education.

Classroom Resources: Equipping classrooms with age-appropriate learning materials, including books, educational games, and technology where possible.

Small Class Sizes: Maintaining small class sizes to ensure personalized attention and effective learning experiences.

Early Childhood Education: Establishing a strong foundation in literacy and numeracy through early childhood education programs.

2. Holistic Development: Supporting Physical, Emotional, and Social Growth of Primary Students.

Physical Health and Nutrition: Providing nutritious meals and promoting physical activities to enhance students' health and well-being.

Emotional Support: Offering counseling services and emotional support to help students navigate social and emotional challenges.

Character Development: Instilling values of respect, responsibility, and empathy through character education programs.

Extracurricular Activities: Organizing extracurricular activities such as sports, arts, and cultural events to develop students' talents and interests.

Parental Engagement: Encouraging parental involvement in their children's education through workshops, parent-teacher meetings, and community events.

3. Community Empowerment: Engaging and Empowering Local Community Members in Primary Education

Local Employment Opportunities: Creating jobs for community members as teaching assistants, support staff, and maintenance personnel.

Community Volunteerism: Encouraging community members to volunteer in classrooms, school events, and mentoring programs.

Skill Development Workshops: Offering training sessions and workshops to enhance the skills of parents and community members, enabling them to support children's learning at home.

Community Outreach: Engaging with local leaders, organizations, and businesses to build partnerships that benefit the school and broader community.

Environmental Education: Teaching students and community members about environmental conservation and sustainability practices relevant to their local context.

The primary objectives of African Children's Hope for Love Foundation Uganda focus on providing accessible and quality primary education, nurturing the holistic development of pupils and empowering the local community through active participation and support. These efforts aim to create a positive and supportive educational environment that prepares children for academic success and personal growth in Uganda.

Need assessment

Currently the community lacks access to:

1. Access to Basic Education and Essential Resources

Educational Infrastructure: The community lacks adequate schools and educational facilities, leading to limited access to education, especially for children from impoverished backgrounds. Schools may be distant, poorly equipped, or lacking essential resources like textbooks and teaching materials.

Teacher Shortages: There is a shortage of qualified teachers, impacting the quality of education provided. This shortage may result in overcrowded classrooms and limited individual attention for students.

Barriers to Enrollment: Economic constraints and cultural factors may prevent children, particularly girls and those from marginalized groups, from attending school regularly or completing their education.

Quality of Education: The educational curriculum and teaching methods may not meet national standards or adequately prepare students for future opportunities, limiting their academic and career prospects.

Lack of Educational Support: Families may struggle to afford school fees, uniforms, and other expenses associated with education, further hindering children's access to basic education.

2. Facilities to Support Orphaned and Impoverished Children

Orphanage and Shelter Shortages: There is a lack of adequate facilities such as orphanages, shelters, or foster care homes to provide safe and supportive environments for orphaned or vulnerable children.

Basic Needs Insecurity: Orphaned and impoverished children may lack access to nutritious meals, healthcare, clothing, and basic hygiene facilities, affecting their health and well-being.

Educational Opportunities: Limited access to educational programs tailored to their needs may hinder their academic development and future prospects.

Psychosocial Support: These children may lack access to counseling, mentorship, and activities that promote emotional and social development, impacting their overall growth.

Community Integration: Efforts to integrate these children into the community and provide opportunities for social inclusion and participation may be insufficient or lacking altogether.

3. Opportunities for Community Development and Empowerment

Economic Opportunities: The community lacks income-generating activities, vocational training programs, and entrepreneurial opportunities that could empower residents economically and reduce poverty.

Skills Development: There is limited access to training, workshops, and education programs that build skills and competencies necessary for sustainable livelihoods and economic growth.

Infrastructure Deficiencies: Critical infrastructure such as roads, water supply systems, sanitation facilities, and community centers may be inadequate or poorly maintained, limiting overall development.

Social Capital Building: Opportunities for community members to engage in collective action, community leadership, and decision-making processes may be scarce, hindering social cohesion and resilience.

Cultural and Social Barriers: Cultural norms, gender disparities, and social inequalities may restrict certain groups' access to opportunities for community development and empowerment.

4. Support Systems for Child Development and Family Empowerment

Healthcare Access: Families may face barriers in accessing healthcare services, including maternal and child health care, vaccinations, and preventive care, affecting child health outcomes.

Parental Support: There is a lack of programs that provide parenting education, counseling, and support to strengthen family relationships and improve parenting skills.

Social Services Availability: Essential social services such as child protection, legal aid, and psychological support may be insufficient or unavailable, leaving families vulnerable to crises and challenges.

Economic Stability: Families may lack access to financial assistance, livelihood opportunities, and social safety nets that promote economic stability and resilience.

Educational Support: Programs aimed at enhancing educational outcomes for children, supporting academic achievement, and promoting lifelong learning may be limited or underfunded.

In summary, the community faces significant challenges in accessing basic education, essential resources, and support systems for child development and family empowerment. Addressing these gaps requires comprehensive assessments, targeted interventions, and collaborative efforts from stakeholders to improve educational outcomes, enhance community development opportunities, and promote the well-being of children and families in need.

4.0 Project Description

1. Location and Infrastructure

Site Selection: Identify and secure a safe, accessible plot of land within the community, ensuring it meets the specific needs of a primary school and its stakeholders.

Construction Plan: Develop and construct essential facilities including classrooms, a library, a playground, sanitation facilities, and a community center to support a comprehensive primary education environment.

Sustainability: Employ eco-friendly materials and renewable energy sources, such as solar panels, to promote environmental sustainability and reduce operational costs.

2. Educational Programs

Curriculum: Implement a robust curriculum tailored to primary education, encompassing core subjects such as literacy, numeracy, science, social studies, and incorporating introductory STEM (Science, Technology, Engineering, and Mathematics) activities, arts, and basic vocational training.

Extracurricular Activities: Offer a wide range of extracurricular activities suitable for primary school children, including sports, arts, music, and various clubs, to foster students' talents and interests.

Support Services: Provide essential support services such as counseling, regular health check-ups, and nutrition programs to ensure the overall well-being of the students.

3. Staffing and Training

Teachers: Recruit qualified, compassionate educators with expertise in primary education, committed to providing high-quality teaching and nurturing the potential of every young student.

Training: Conduct regular professional development sessions for teachers to keep them updated with the latest educational best practices and methodologies specific to primary education.

Support Staff: Hire local community members for administrative and maintenance roles, promoting local employment and community engagement.

4. Community Involvement

Engagement: Actively involve parents and local leaders in the decision-making processes to foster a sense of ownership and ensure the primary school meets community needs.

Workshops: Offer adult education and skills training workshops to empower the community economically and socially, enhancing overall community development.

5. Funding and Budget

Sources: Secure funding through various channels, including partnerships with companies engaged in corporate social responsibility, non-profit organizations, private donations, churches, charities, and fundraising events.

Budget: Provide a detailed budget breakdown covering construction, staffing, program development, and operational costs to ensure transparency and effective resource allocation.

6. Monitoring and Evaluation

KPIs: Establish key performance indicators (KPIs) to monitor student enrollment, academic performance, and community involvement, ensuring the primary school's objectives are being met.

Feedback Mechanisms: Implement regular surveys and meetings with parents, teachers, and students to gather feedback and make necessary adjustments to programs and operations.

Reporting: Produce annual reports to stakeholders detailing the progress and impact of the project, ensuring accountability and continuous improvement.

5.0 Implementation Plan

To ensure the successful establishment and operation of the school, a structured and phased implementation plan has been devised. This plan outlines the key activities and milestones over a period of approximately 18 months, divided into four distinct phases: Planning and Fundraising, Construction, Program Development, and Inauguration and Operation. Each phase is critical in achieving our goal of providing high-quality education and support to orphans and vulnerable children in Kito, Nakaseke District. All stakeholders, acting in collaborative partnership, will implement this plan (Walsh et al., 2022)

5.1 Phase 1: Planning and Fundraising (Months 1-6)

Finalize Site Selection and Obtain Necessary Permits: Secure a safe and accessible plot of land within the community and complete all required legal and regulatory procedures.

Launch Fundraising Campaigns and Apply for Donations and Grants: Initiate comprehensive fundraising efforts, targeting individuals, corporate sponsors, non-profit organizations, and other potential donors to secure the necessary financial resources.

Develop Detailed Architectural Plans and Project Timeline: Collaborate with architects and engineers to create detailed blueprints for the school facilities and establish a realistic timeline for project completion.

5.2 Phase 2: Construction (Months 7-12)

Begin Construction of School Facility: Commence the building of classrooms, a library, playground, sanitation facilities, and a community center using sustainable materials and practices.

Hire Initial Staff and Start Community Outreach Programs: Recruit key staff members, including the General Manager and Head Teacher, and engage with the local community to build awareness and support for the project.

Establish Partnerships with Local Businesses and Organizations for Support: Forge alliances with local businesses and organizations to gain additional resources and support for the construction phase and future operations.

5.3 Phase 3: Program Development (Months 13-15)

Develop and Refine Educational and Extracurricular Programs: Design a comprehensive curriculum and extracurricular activities tailored to the needs of primary school children, ensuring a well-rounded education.

Train Teachers and Support Staff: Provide professional development and training for teachers and support staff to equip them with the skills and knowledge necessary for delivering high-quality education and services.

Set Up Monitoring and Evaluation Systems: Implement systems to track progress, measure outcomes, and gather feedback to ensure continuous improvement and accountability.

5.4 Phase 4: Inauguration and Operation (Months 16 Onwards)

Officially Open the School and Begin Classes: Celebrate the inauguration of the school and welcome the first cohort of students, marking the beginning of a new era of education and opportunity in the community.

Continuously Assess and Improve Programs Based on Feedback: Regularly review and refine educational and support programs based on feedback from students, parents, and staff to ensure they meet the evolving needs of the community.

Foster a Sustainable and Supportive School Environment: Maintain a focus on sustainability and community involvement, creating a nurturing and inclusive environment where all children can thrive.

6.0 Conclusion

Building a primary school in this vulnerable community is a crucial step toward breaking the cycle of poverty and providing a brighter future for the children. With a focus on sustainability, community involvement, and comprehensive educational programs, this project aims to create lasting positive change. We seek your support and partnership in making this vision a reality.

REFERENCES

Walsh, P. P., Banerjee, A., & Murphy, E. (2022). The UN 2030 Agenda for Sustainable Development. *Sustainable Development Goals Series, Part F2740*, 1–12.

https://doi.org/10.1007/978-3-031-07461-5_1

Walsh, P. P., Banerjee, A., & Murphy, E. (2022). The UN 2030 Agenda for Sustainable Development. *Sustainable Development Goals Series, Part F2740*, 1–12.

https://doi.org/10.1007/978-3-031-07461-5_1

APPENDICES

Artistic impression





